



## Accessibility down the line

The Allgäu ART Hotel provides an extraordinary mix of Allgäu lifestyle, art and inclusion. Your stay at this stylish hotel in the city center of Kempten becomes a barrier-free experience. Whether it is a conference (MICE), a family celebration, a restaurant visit, a short trip or a wellness holiday, your stay will be untroubled. Here, the needs of guests with visual, mobile or hearing impairment are taken into account at the highest level. In short, an environment, in which you can move without boundaries and receive as much support as needed or wanted.



### At a Glance

- 56 rooms in total
- 12 accessible rooms for wheelchair users or guests with a physical impairment
- 3 family rooms for wheelchair users or guests with a physical impairment
- restaurant
- large spa and wellness area
- rooftop terrace
- tactile guidance system and guidance support system
- optical warning system (flashing light)
- meeting and conference rooms
- parking garage

### Allgäu ART Hotel



📍 Alpenstraße 9  
87435 Kempten  
Deutschland

☎ +49. 831. 540 8600

✉ [info@allgaeuarthotel.de](mailto:info@allgaeuarthotel.de)

🌐 [www.allgaeuarthotel.de](http://www.allgaeuarthotel.de)





## Welcome

The Allgäu ART Hotel can easily be reached by car. For guests with limited mobility, who arrive by train, a shuttle service by the hotel can be arranged.

Distances:

- Train Station Kempten - 1,5 km
- Airport Memmingen - 45 km
- Airport Munich - 157 km

## Parking

- The hotel offers 5 barrier-free parking spaces directly at the hotel entrance as well as 4 barrier-free parking spaces in the parking garage
- The hotel offers 2 parallel elevators

All parking spaces are marked at the walls.

Dimensions (parking spaces):

- 5 m x 3,30 m (outdoor parking)
- 5 m x 3,30 m (parking garage)

## Entrance and Reception

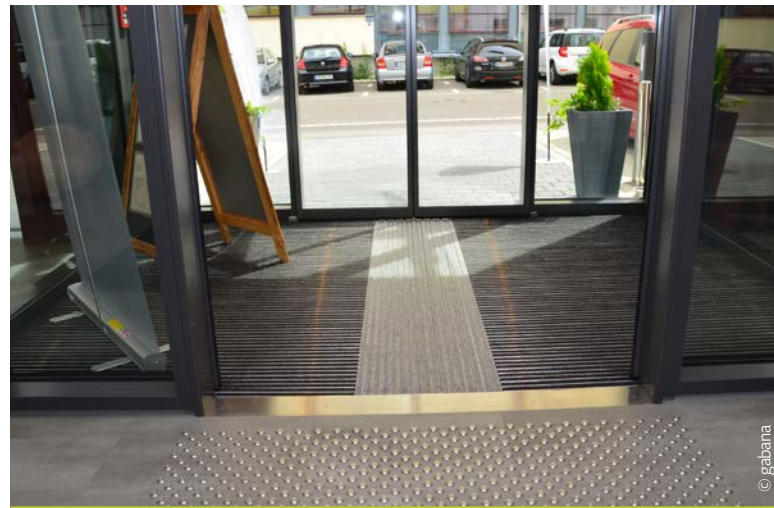
- 2 automatic glass sliding doors
- tactile guidance system
- wheelchair accessible reception
- tactile overview plan
- 2 accessible toilets in the lobby
- wheelchair accessible bar at ground level

## Arrival

- a wheelchair accessible shuttle is available for wheelchair users arriving at the train station (an external company provides this service)
- information for wheelchair users about day trips and „what to do in the area“ is available at the reception
- for guests with a visual impairment a guided tour of the hotel is available upon request



Hotel Entrance with Lobby



Entrance Area



Reception





# Elevators & Floors

## Elevators

- 2 elevators with audio guidance and tactile buttons
- full wall mirrors in the elevators

## Floors

- tactile guidance system to the elevators
- tactile room plan on all floors; located across from the elevators
- hand rails on both sides
- contrasted lighting
- contrasted room numbers
- automatic door opener in 12 rooms and 3 family rooms for wheelchair users or people with mobility restrictions



Contrasting Room Numbers



Tactile Floor Plan



Hallway with Hand Rails on both Sides



Elevators



## Accessible Double Bed Room

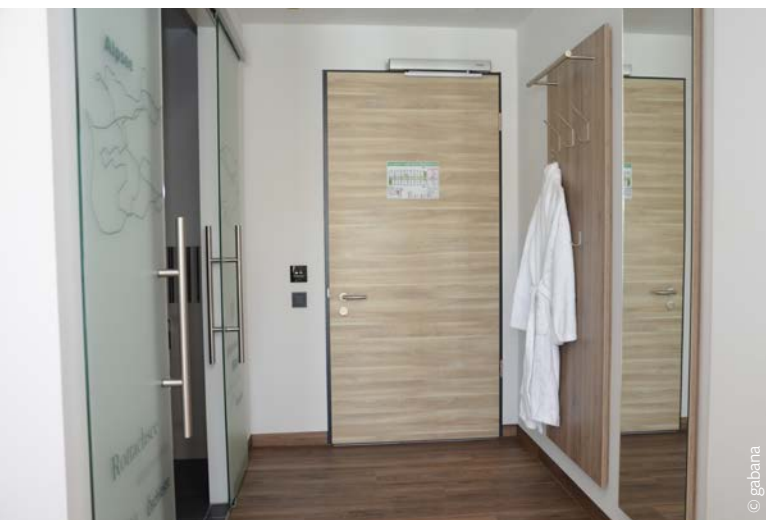
The hotel consists of 56 rooms in total and 12 comfortable and very spacious barrier-free double bed rooms (29 m<sup>2</sup>). 3 Rooms have a balcony.

Additionally there are three 44 m<sup>2</sup> barrier-free familyrooms available. These consist of 2 bedrooms with a studio kitchen and a shared bathroom. An undisturbed use and freedom of movement is guaranteed.

All rooms are equipped with a 32“ flat-screen TV, digital notebook safe, free WiFi, telephone, a desk with an armchair, a stool and a full body mirror.



Balcony Access



Entry with sliding Doors to the Bathroom

## Accessible Double Bed Room 29 m<sup>2</sup> (for example room no. 414)

- the room door is automatically opened by card from the outside and can be opened from the inside by a switch
- the door switch and the light switch are placed at a height of 80 cm
- the hallways are covered with laminated flooring, the rooms have passable carpet
- wardrobe with sliding doors
- clothes rails at a height of 120 cm or 143 cm
- clothes hooks (room entry) at 125 cm and 158 cm
- 2 box-spring beds (90 x 200 cm) (can be separated)
- height of the bed: 60 cm
- light switch can be operated from the bed
- space at the left side of the bed: 160 cm
- space at the right side of the bed: 92 cm
- on the longer side of the bed 12 cm gap for accessibility
- beds and nightstands can be moved
- desk height: 75 cm
- stool and chair without armrests
- treshold to balcony: 4 cm
- all rooms have an optical flash signal as well as an acoustic warning system (bell) for hearing and visually impaired guests
- dogs are permitted



Light Switch next to the Bed





## Accessible Family Room

### Family Room 44 m<sup>2</sup> with 2 bed rooms and a shared bathroom

The spacious family room with a balcony (4 m<sup>2</sup>) consists of 2 separate bedrooms with a connection door. One room has an electrical nursing bed. A small kitchen offers the possibility to prepare small meals.

The room door can automatically be opened by key card from the outside and can be opened from the inside by a switch

- the door switch and the light switch are placed at a height of 80 cm
- the hallways are covered with laminated flooring, the rooms have passable carpet
- wardrobe with sliding doors
- clothes rails at a height of 120 cm or 143 cm
- clothes hooks (room entry) at 125 cm and 158 cm
- Room 1: 2 box-spring beds (90 x 200 cm) (can be separated)
- Room 2: 1 electrical nursing bed (100 x 200 cm)
- height of the bed: 60 cm
- light switch can be operated from the bed
- space in front of the nursing bed 200 cm x 200 cm
- space left of the double bed: 150 cm
- space right of the bed: 93 cm
- beds and nightstand can be moved
- on the longer side of the bed 12 cm gap for accessibility
- desk height: 75 cm
- stool and chair without armrests
- small kitchen with microwave, refrigerator, electrical water boiler, dishes and cutleries
- dining table including 2 chairs without armrests
- all rooms have an optical flash signal as well as an acoustic warning system (bell) for hearing and visually impaired guests



Family Room with Connection Door



Kitchenette with Dining Table



Flashing Light





## Bathroom & Toilet

### Bathroom in the barrier-free double room (for example room no. 414)

The well-planned bathroom is about 6 m<sup>2</sup> and has a generous accessible shower (same level). The bathroom is accessible through an easy-sliding glass door.

- toilet seat at a height of 46 cm
- space on the left side of the toilet: 90 cm
- space on the right side of the toilet: 50 cm
- 2 support handles next to the toilet at a height of 75 cm
- distance between the handles: 67 cm
- sink with integrated handles
- lower height of the sink: 80 cm
- hair dryer at a height of 120 cm, make-up mirror at a height of 133 cm
- emergency call next to the toilet and next to the shower, can be operated while lying on the floor
- shower with brackets at a height of 75 cm
- shower seat
- fittings within reach



Bathroom with two sliding Doors



Toilet in a double Room

### Bathroom in the family rooms

- the bathroom with a height- and side-adjustable toilet lift offers maximum flexibility and an accessibility from both sides
- seat height and side clearance individually adjustable
- 2 support handles
- distance between the handles: 67 cm
- sink with integrated handles
- lower height of the sink: 80 cm
- hair dryer at a height of 120 cm, make-up mirror at a height of 133 cm
- emergency call next to the toilet and next to the shower, can be operated while lying on the floor
- shower with brackets at a height of 75 cm
- shower seat
- fittings within reach



Bathroom (Family Room)





## Restaurant



Restaurant "Waldbeere"

The Restaurant „Waldbeere“ is a space of temptation: from the rich breakfast buffet to the lunch menu with delicious food with a fair price-performance ratio, a la carte meals and an impressive wine list, which leaves nothing to be desired. Food - drinks - enjoyment ... not more and not less.

- tables can be accessed with a wheelchair
- chairs with armrests
- barrier-free toilet close to the restaurant
- winter garden (solarium)
- terrace with seats in the shade
- only assistance dogs are allowed



Fine Dining



Breakfast Area





## Wellness & Fitness

On the fifth floor of the hotel, high above the roofs of Kempten, there is a spacious wellness area with changing facilities and a barrier-free toilet.

### Wellness

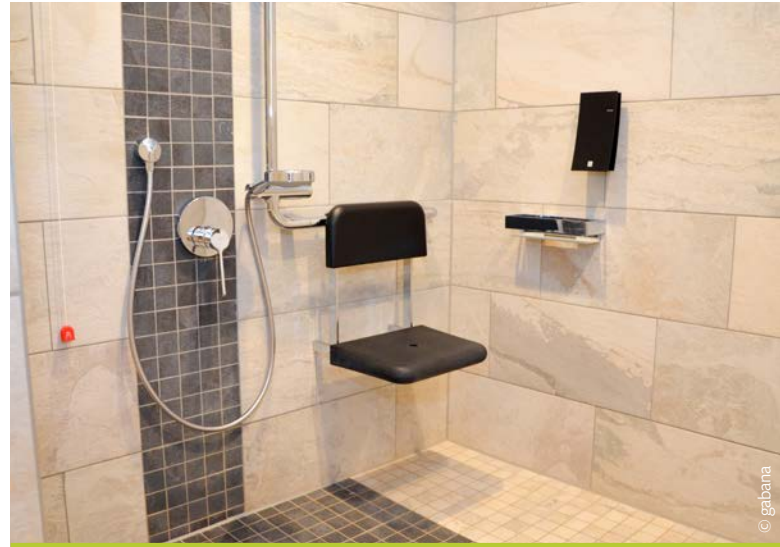
The place for pure relaxation: next to baths, massages and aroma therapies, our guests will find a one of a kind barrier-free sauna area.

- Finnish sauna with access to the roof terrace
- bio sauna with a panoramic view
- steam sauna
- waterfall shower with Kneipp tubing (outdoors)
- two height-adjustable massage beds
- partner tub with access lift
- relaxation room with comfortable loungers
- mosaic tiles as a tactile control system

### Fitness

Gym and training equipment for cardio, endurance and muscle training as well as coordination and balance:

- treadmill, stepper
- reclining, pulling, angular stroke
- drawbar and pedalos



Accessible Shower



Outdoor Swimming Pool



SPA





## Wellness & Fitness



Relaxation Room



Mosaic Tiles as a tactile Guidance System



Double Bathtub with Access Support



Sauna with City Panorama



Height adjustable Massage Chairs





## Meetings & Events



Numerous Meeting Facilities

The hotel offers 3 barrier-free rooms, which can be individually combined, depending on the number of guests and the space required. The rooms are also perfect for festive occasions and events.

### Meetings and events

- 3 rooms, can be combined up to a total space of 130 m<sup>2</sup> for up to 120 people
- Equipment: beamer, screen, flipchart, pin board
- 2 barrier-free toilets close to the meeting room
- wardrobe bars at different heights
- adjustable (lowerable) bistro tables
- outside terrace
- parking garage



Banquets



Adjustable Bistro Tables



## Attractions



Snooze Room

And on top ...  
The Allgäu ART Hotel offers some unique attractions:

### Snooze Space ("Snoezel Space")

Pure relaxation is given in this room, where you can enjoy a short break. Different light sources, water columns and color changing lighting create various visual effects, which give a calming effect. Relax on the waterbed and indulge yourself with the atmosphere and the colors.

### 6 Draisine-Cycles

can be borrowed

### Sun terrace

So close to the sky ... you are on the roof of the Allgäu ART Hotel. With a nice book, an extensive sunbath or a cosy coffee break you can relax after a hard day and enjoy the wonderful view.



Climbing Wall

### Indoor climbing wall

For people who want to go to the top: whether by yourself or in a group (team building), with or without a climbing coach or assistance. The equipment is ready for you. The climbing wall offers different levels of difficulty and is an attraction for you, your family and your companions.





## General Information

### Contact



#### Allgäu ART Hotel

📍 Alpenstraße 9, 87435 Kempten, Deutschland

☎ +49. 831. 540 8600

✉ info@allgaeuarthotel.de

🌐 www.allgaeuarthotel.de

### Concept and Marketing



#### gabana - agency for barrier-free management

📍 Kirchbichl 3, 6352 Ellmau, Österreich

☎ +43. 5358. 44557

✉ k.grundmann@gabana.net

🌐 www.gabana.net

### We would like to thank



WOHLFÜHLKONZEPTE FÜR IHRE GÄSTE

For the images r&s mayer Hotel und Objekt GmbH

Photographers : Christian Schneider and Harald Klein

🌐 www.rs-mayer.de

### Disclaimer



Suitable for wheelchair users



Suitable for visually impaired guests



Suitable for guests with hearing impairment



Click to listen to the text



This PDF document is visually and technically barrier-free and can be read with output media such as screenreaders.

